

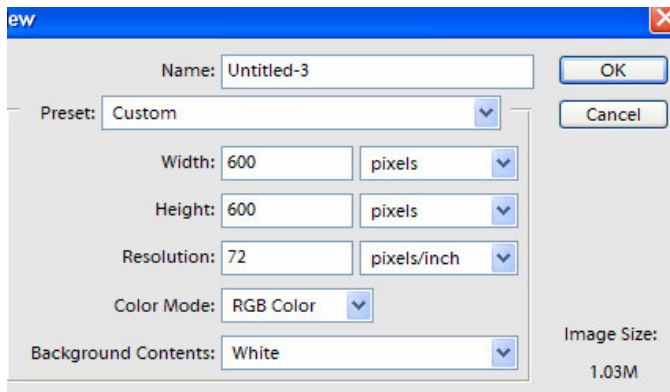
Using a Grid with Filters

Much like the artist Andy Warhol did with celebrities' pictures (see the picture at right called "Marilyn"), you can make variations of the same picture into "art". This assignment will have you placing the same image on a 4X4 grid, and applying different filters to each image. Let's begin:



1. Open **Photoshop Elements I Edit and Enhance Photos**

2. Choose **File I New** from the main menu, and choose **Blank File**. Set it up as follows:



Name it something

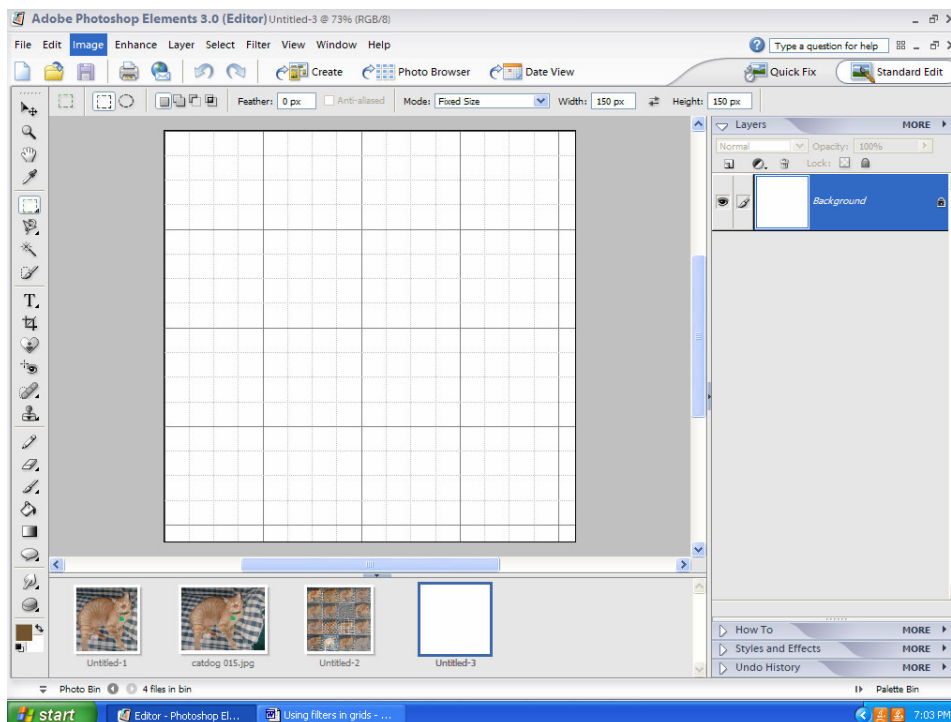
Set Width and height to 600 pixels (not inches)

Color Mode must be RGB color

Background: White

Click OK

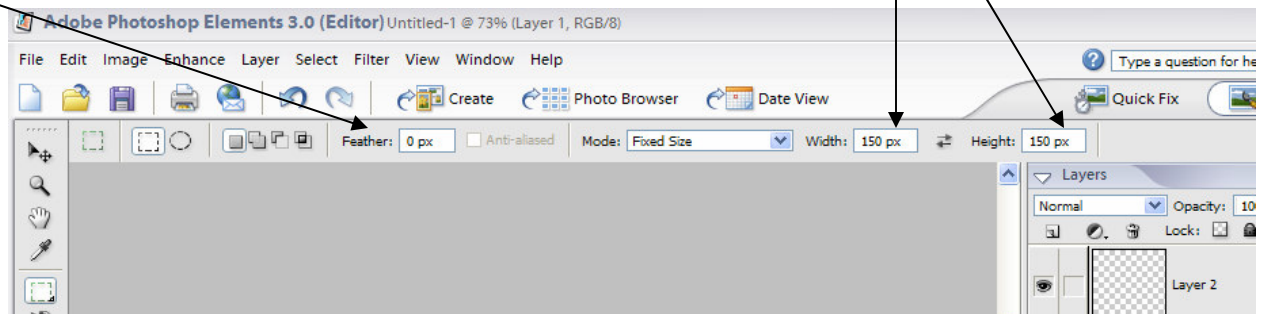
3. Go up to the **View** menu and choose **Grid** (This will help you align your images) The grid looks like this:



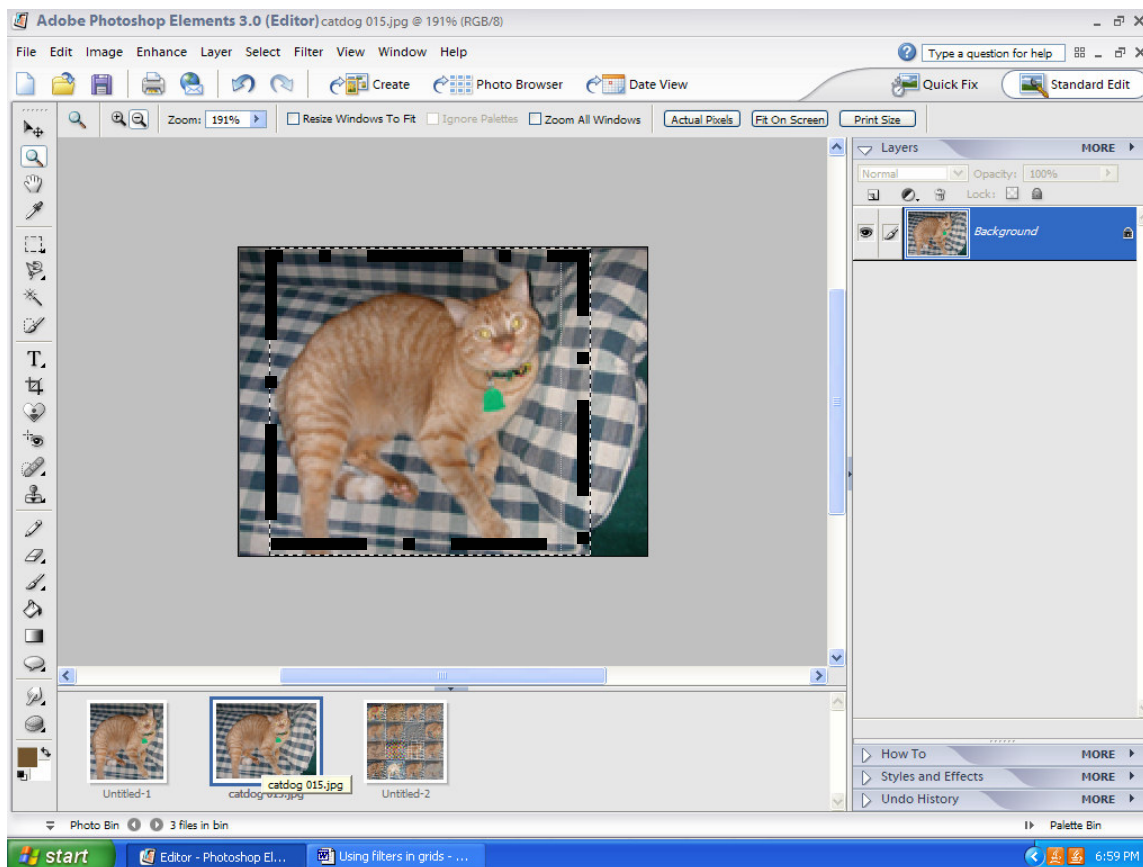
4. Now choose an image you intend to use for the grid picture. The original image should be at least 150X150 pixels. Choose **File | Open** from the main menu to locate it in your folder, and double check its size at **Image | Resize | image size**.

5. **HARDEST JOB**...Make the picture fit the 4X4 grid.

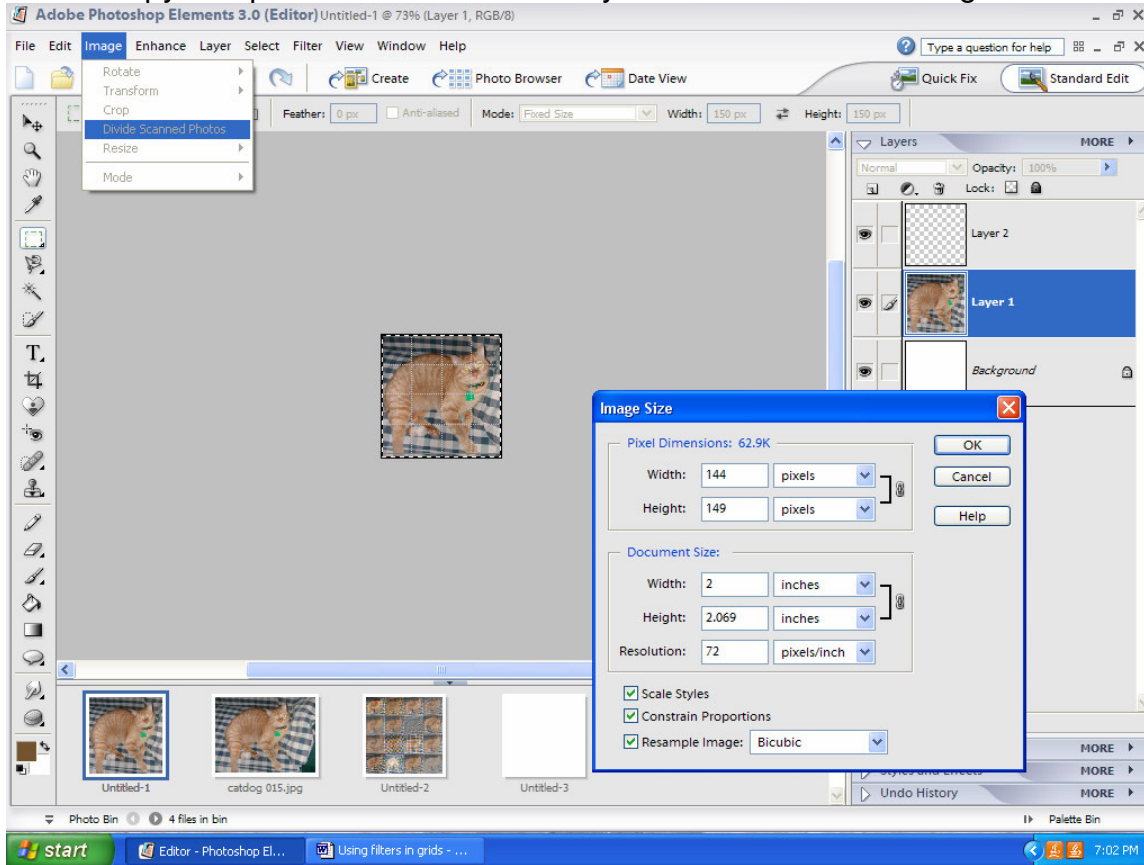
a. Select the rectangular marquee and set the fixed dimensions to 150X150 pixels. This will make it close to the right size. Make sure in the toolbar that the feather is set to zero, unless you want all edges to be feathered. Here is what the toolbar should be set at:



b. Click on the opened image, and move the 150X150 marquee over the area you want to copy. See below. Click **Edit | Copy**, and choose the “grid blank sheet”, and click **Edit | Paste**.

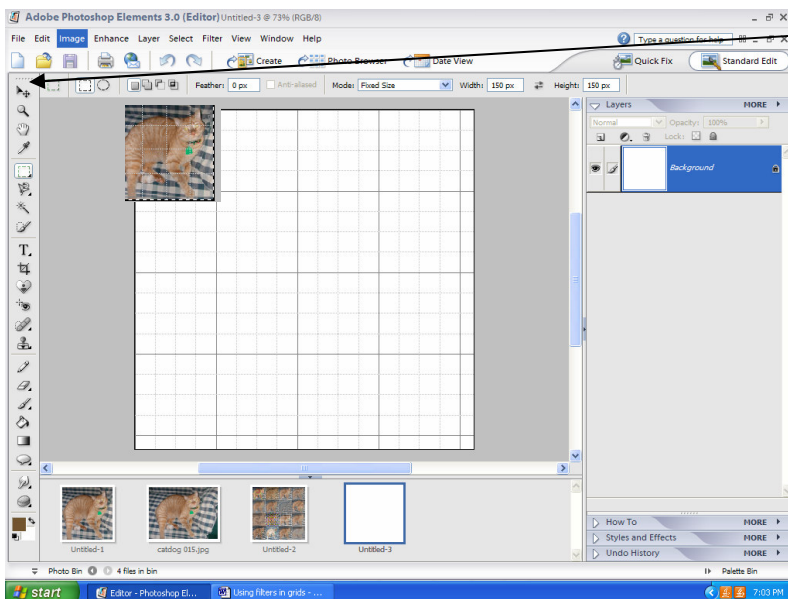


C. If the image is too large before using the rectangular marquee, play around with the image size by choosing **Image | Resize | Image size**. Change the dimensions in the width and height section of the image size window. If that gets too difficult, another way to fix it is to put it in the Grid, crop it exactly to the size, and then open yet another Blank Grid to copy and paste it to. Below shows you where to find the image resize.



6. When you have a picture that fits in the grid 4 across and 4 down (a total of 16), choose **Edit | Copy** from the main menu.

7. Select the grid canvas and choose **Edit | Paste** from the main menu.

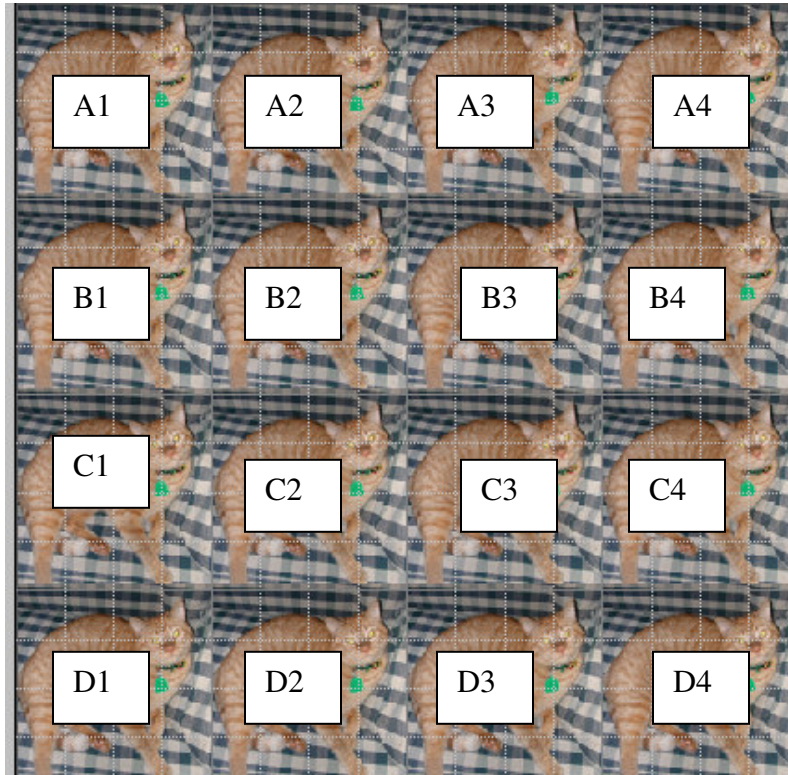


8. Change to the move tool to place the picture in the upper left hand section of the grid.

9. Place the same picture (the duplicate images) in the grids, pasting one at a time from left to right by row, until all 16 grids are full. (You can also do this by asking for duplicate layers of A1 if you want)

10. Here is what it looks like:

11. You should rename each “paste” or layer as shown, from A1 to D4. This will make it easier to identify.



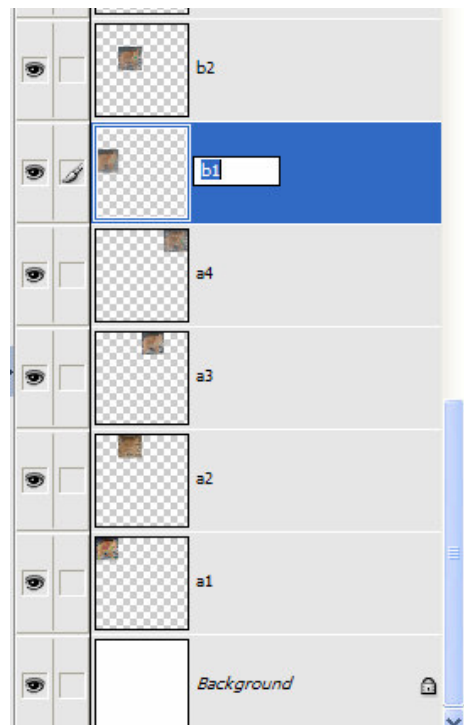
12. To rename, double click on the layer name (see right) and write the letter/number that goes with it.

13. After you have all the duplicate pictures pasted in and renamed, you are ready to start applying different filters to each image. It is a good idea to be organized, and start with A1 and go from there through A1 to A2, and so on, until you have filtered each picture.

14. Highlight A1 in the layers window first. If the paint brush doesn't show up at first, try double clicking in the right side area. When the A1 is activated, you can apply filters of your choice.

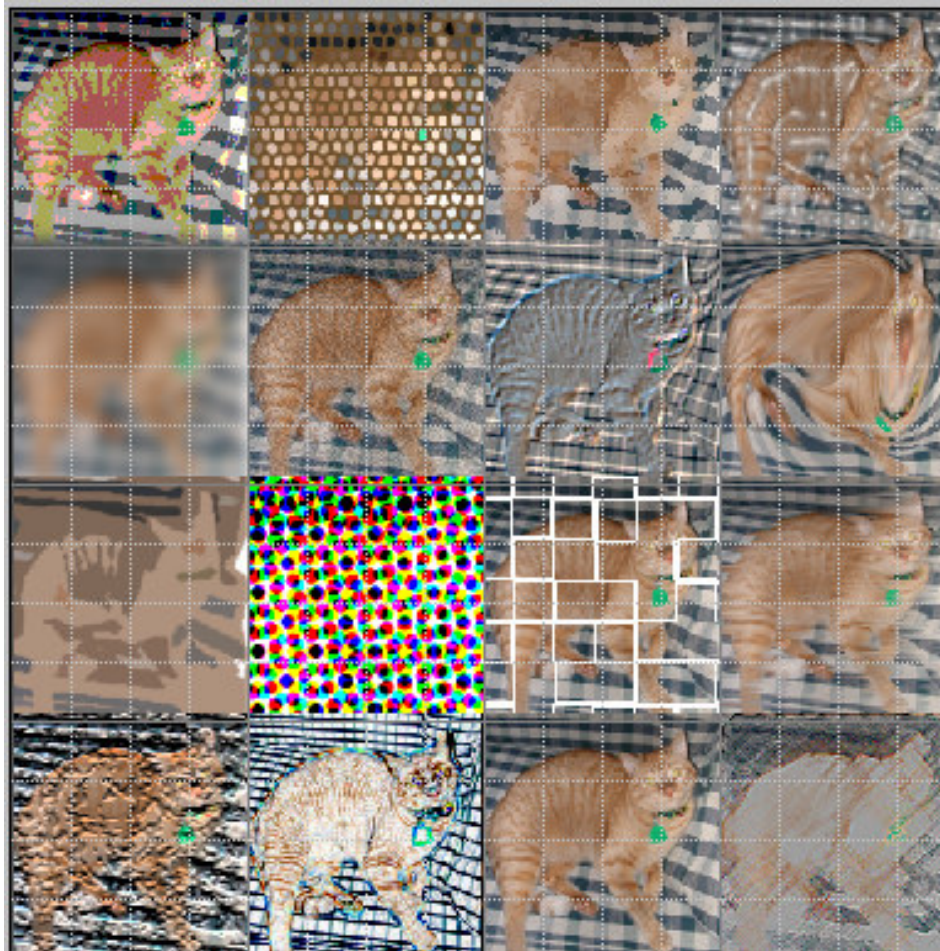
15. Use any of the filters in the Filter menu.

16. Repeat for all, double clicking on the next layer you want to filter to make the paint brush show up.



NOTE: You may have to click away the lock in the previously chosen layer. The lock may come on automatically to link the previous layer.

17. When you are finished with all of the 16 images, save as you would normally. I would save it as a jpeg, as it is a photograph.



Examples:

Grid	Filters	Grid	Filters
A1	Adjustments/Invert	C1	Artistic/Cutout
A2	Texture/Mosaic Tiles	C2	Pixelate/Color Halftone
A3	Artistic/Watercolor	C3	Hmmm....
A4	Artistic/Plastic Wrap	C4	Stylize/Wind
B1	Blur/Gaussian Blur	D1	Texture/Craquelure
B2	Artistic/Film Grain	D2	Stylize/Find Edges
B3	Stylize/Emboss	D3	Regular picture/no filter
B4	Distort/Liquify	D4	Artistic/Colored Pencil